

PEACE RIVER MANASOTA REGIONAL WATER SUPPLY AUTHORITY
BOARD OF DIRECTORS MEETING
June 1, 2022

REGULAR AGENDA
ITEM 1

Water Supply Conditions

Presenter - Richard Anderson, Director of Operations

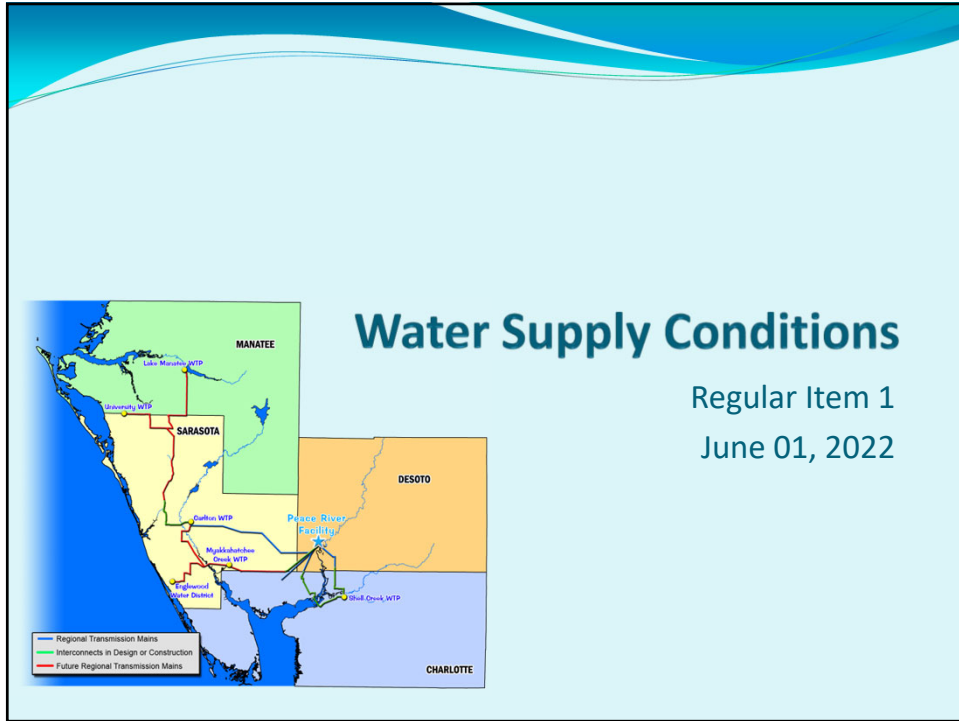
Recommended Action - **Status Report.** This item is presented for the Board's information and no action is required.

Water Supply Conditions at the Peace River Facility as of May 17, 2022.

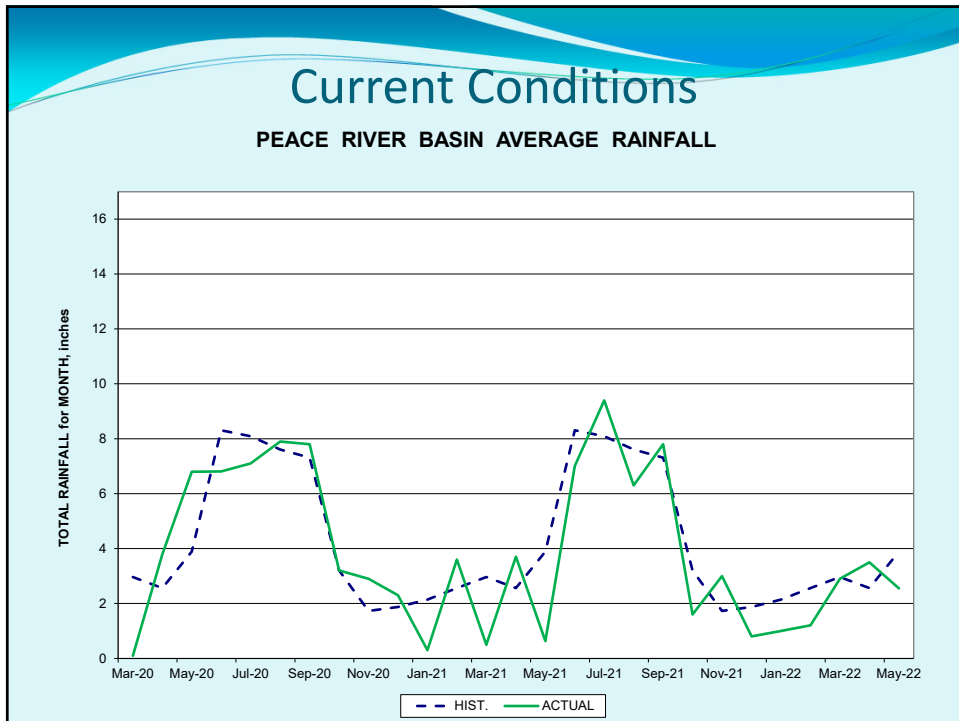
- Water Supply Quantity: Excellent
- Treated Water Quality: Excellent

May Water Demand	30.54 MGD
May River Withdrawals	1.50 MGD
<u>Storage Volume:</u>	
Reservoirs	3.82 BG
ASR	<u>8.11 BG</u>
Total	11.93 BG

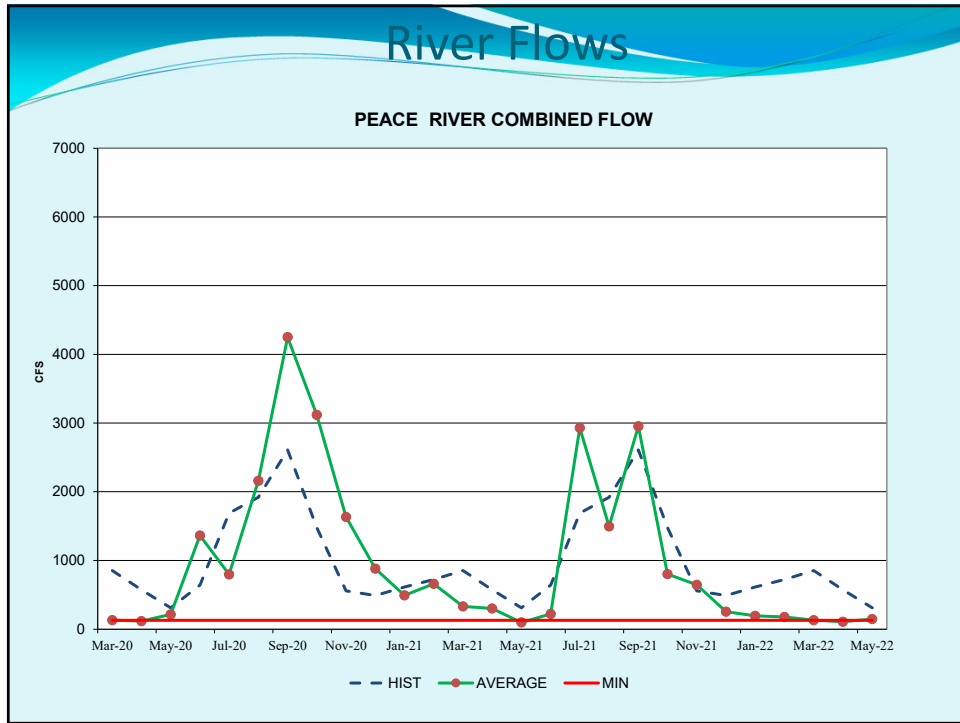
Attachments:
Presentation Materials



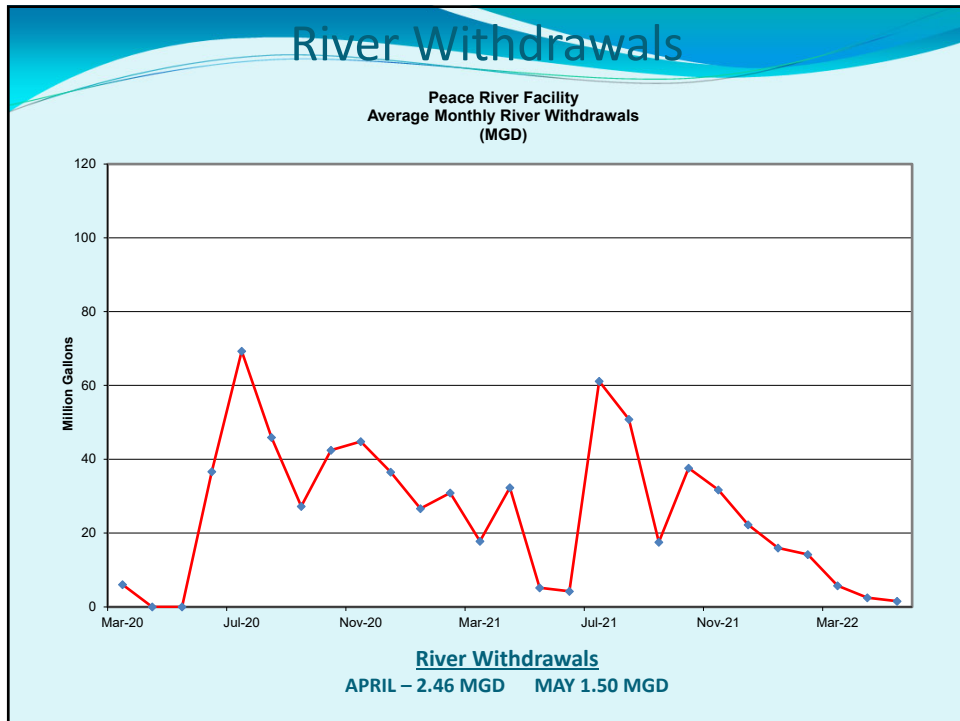
1



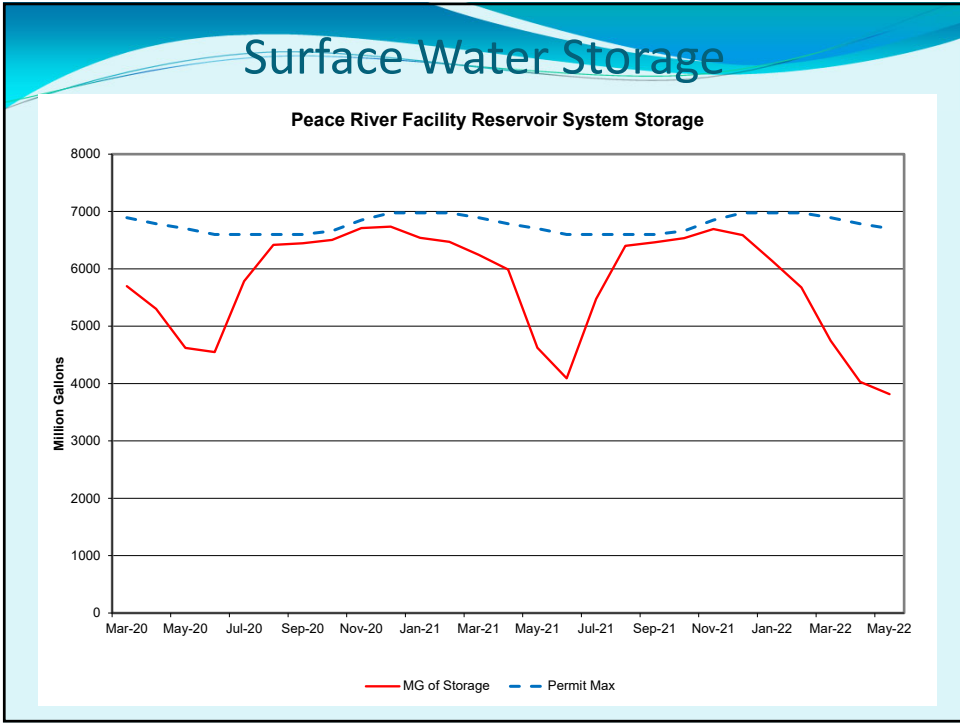
2



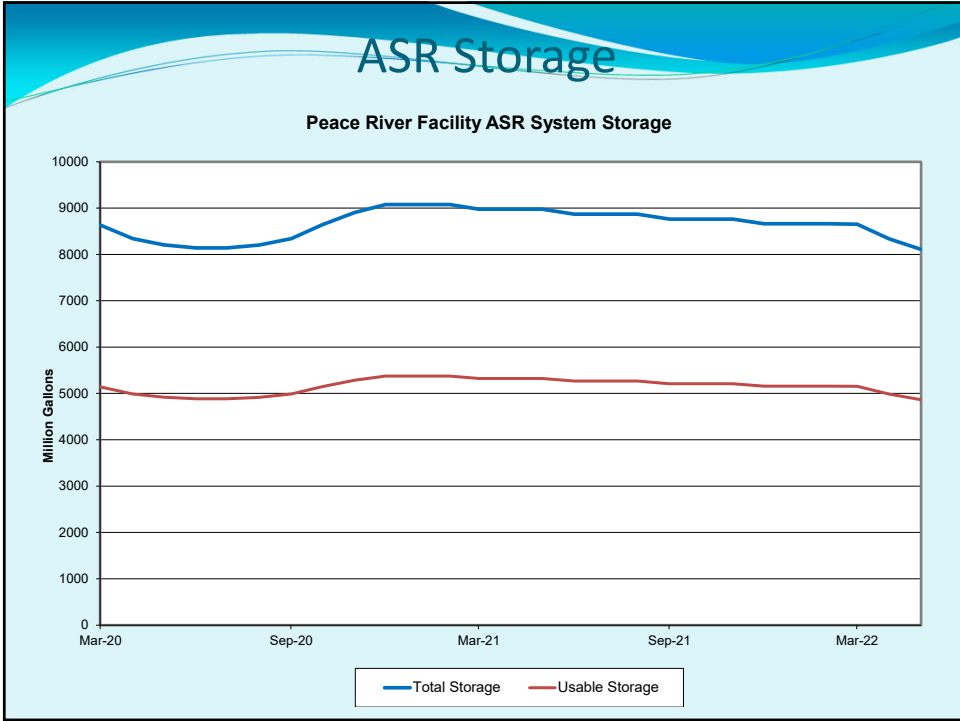
3



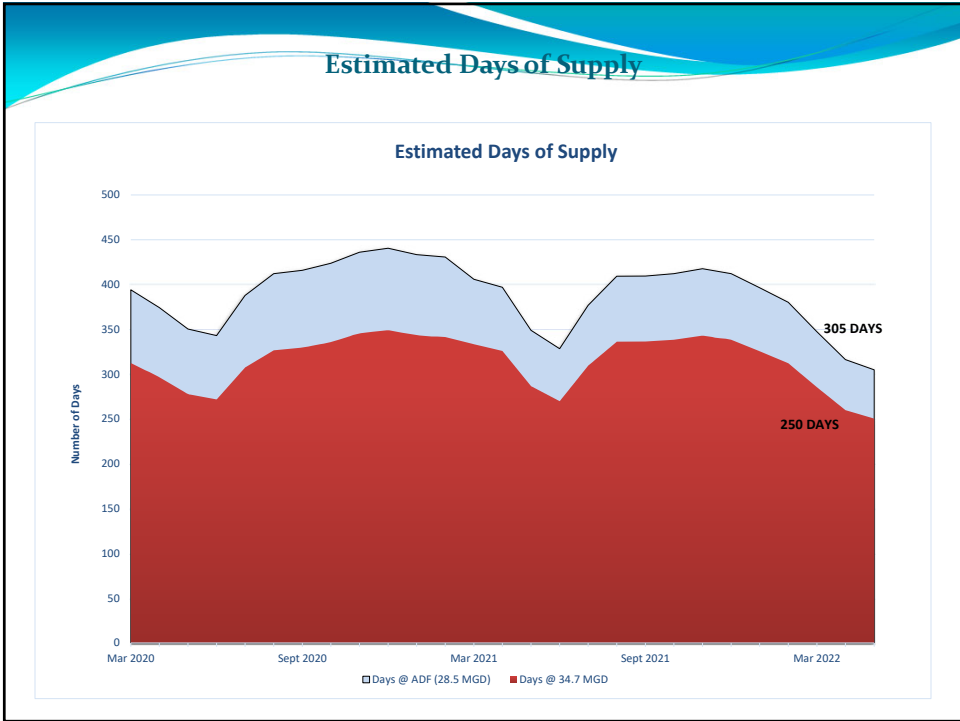
4



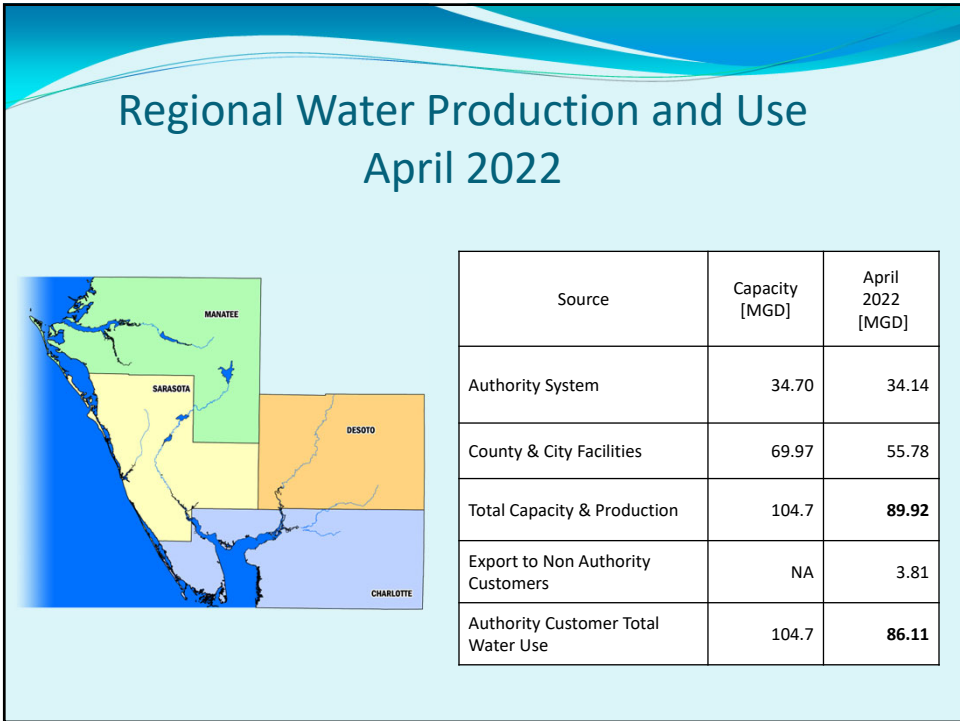
5



6



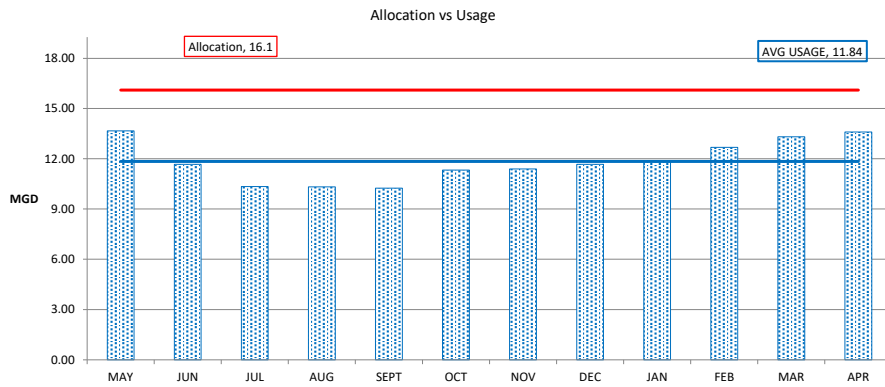
7



8

Charlotte County

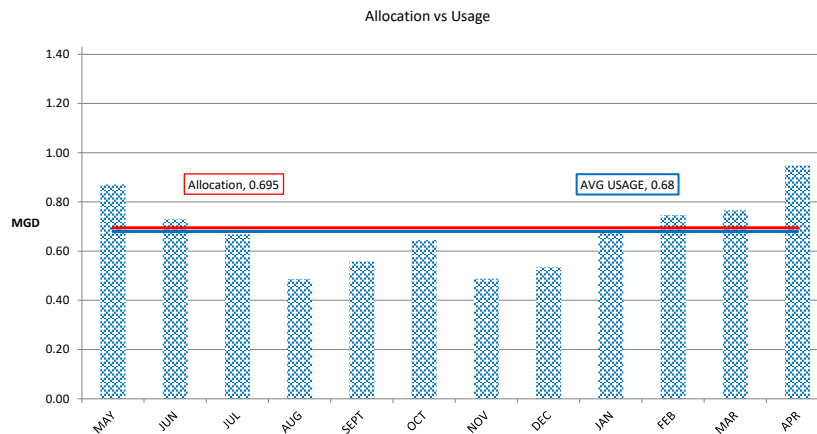
Source	Capacity [MGD]	April [MGD]	% UTILIZED
Peace River Facilities	16.10	13.60	84.5%
Charlotte Self Supply	3.17	0.62	19.5%
TOTAL	19.27	14.22	74%



9

Desoto County

Source	Capacity [MGD]	April [MGD]	% UTILIZED
Peace River Facilities	0.695	0.95	136%
Desoto Self Supply	0.75	0.33	44%
TOTAL	1.445	1.28	88.6%

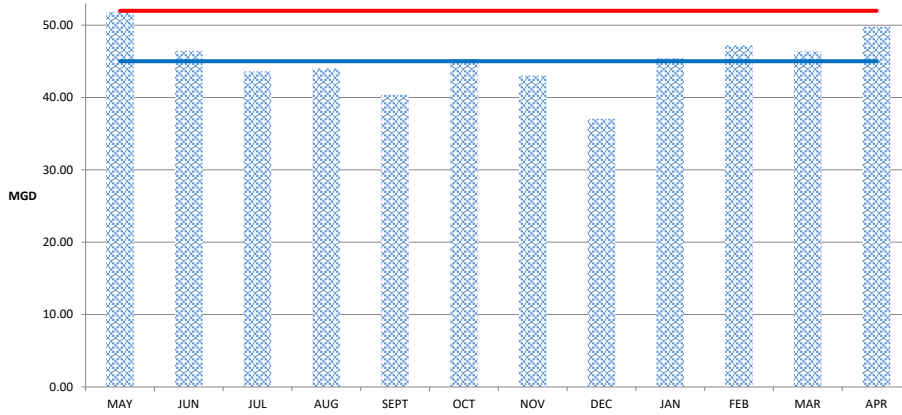


10

Manatee County

Source	Capacity [MGD]	APRIL [MGD]	% UTILIZED
Manatee Self Supply	52.00	41.81	80.4%
Export to Sarasota Co.	NA	4.18	
Export to Others	NA	3.81	
TOTAL	52.00	49.80	96%

2020 MONTHLY USAGE

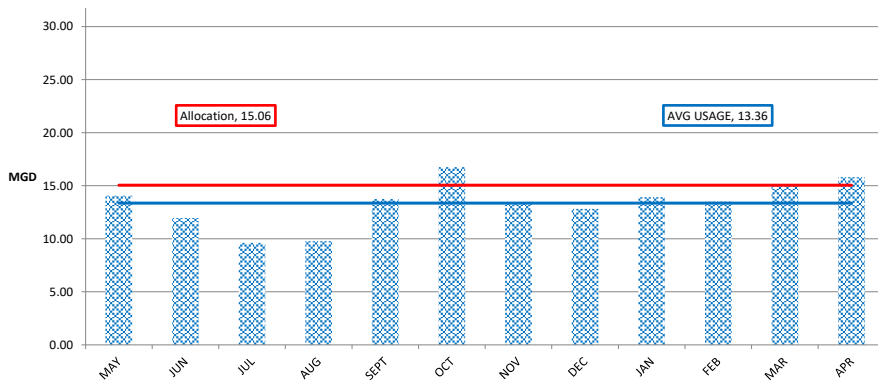


11

Sarasota County

Source	Capacity [MGD]	APRIL [MGD]	% UTILIZED
Peace River Facilities	15.06	15.80	105%
Import from Others	5.00	3.77	75%
County Self Supply	10.52	4.64	44%
TOTAL	33.58	24.22	72%

Allocation vs Usage

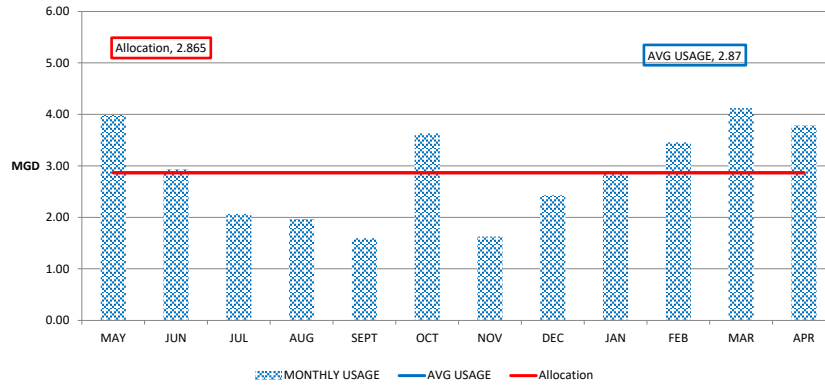


12

North Port

Source	Capacity [MGD]	APRIL [MGD]	% UTILIZED
Peace River Facilities	2.865	3.79	132%
North Port Self Supply	3.30	0.40	12%
Water Exchanged	N/A	0.41	
TOTAL	6.165	4.60	74.5%

Allocation vs Usage

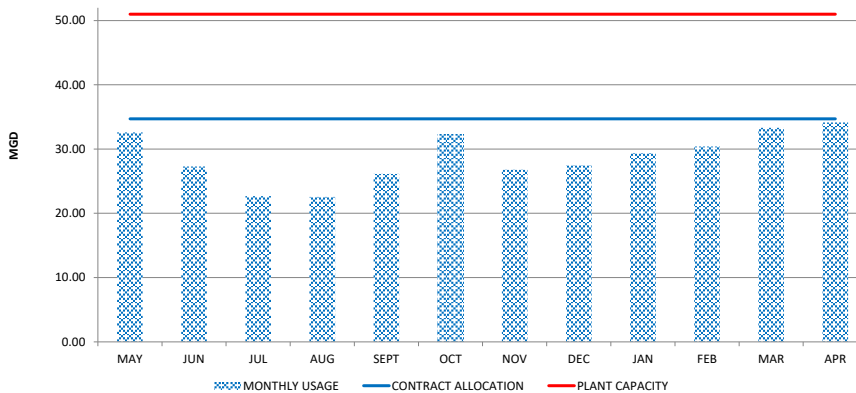


13

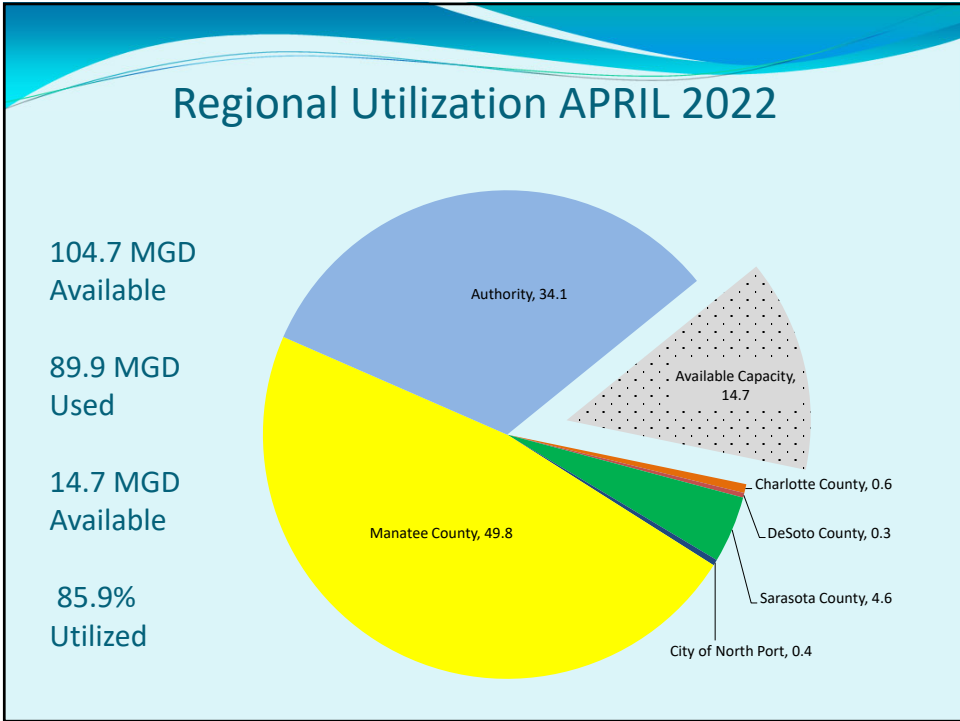
Regional Delivery

PRF	Capacity [MGD]	APRIL [MGD]	% UTILIZED
Permitted Capacity	51.0	34.14	67%
Customer Allocations	34.70	34.14	98%

PEACE RIVER FACILITY DELIVERY



14



15



16