

PEACE RIVER MANASOTA REGIONAL WATER SUPPLY AUTHORITY
BOARD OF DIRECTORS MEETING
October 1, 2021

REGULAR AGENDA
ITEM 1

Water Supply Conditions

Presenter - Richard Anderson, Director of Operations

Recommended Action - **Status Report.** This item is presented for the Board's information and no action is required.

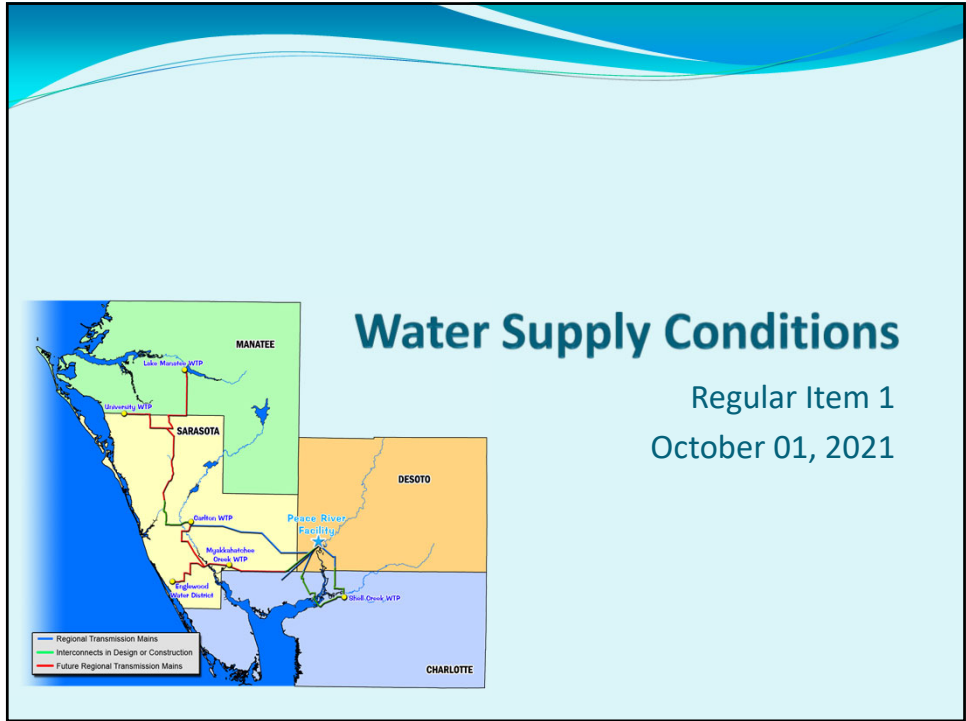
Water Supply Conditions at the Peace River Facility as of September 13, 2021.

- Water Supply Quantity: Excellent
- Treated Water Quality: Excellent

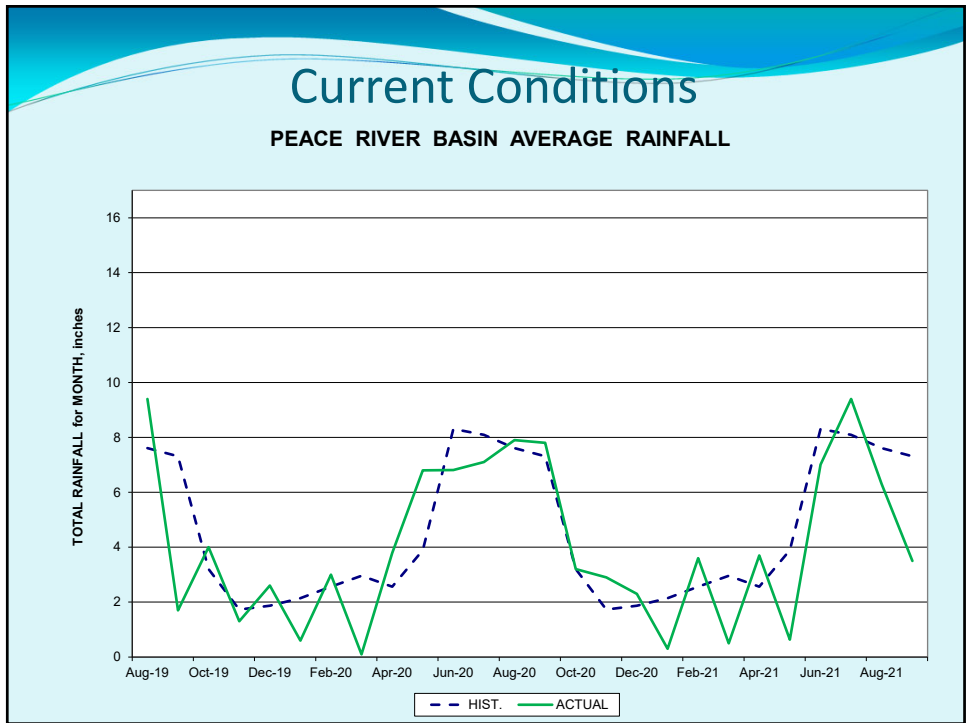
September Water Demand	25.07 MGD
September River Withdrawals	16.3 MGD
<u>Storage Volume:</u>	
Reservoirs	6.43 BG
ASR	<u>8.80 BG</u>
Total	15.23 BG

Attachments:

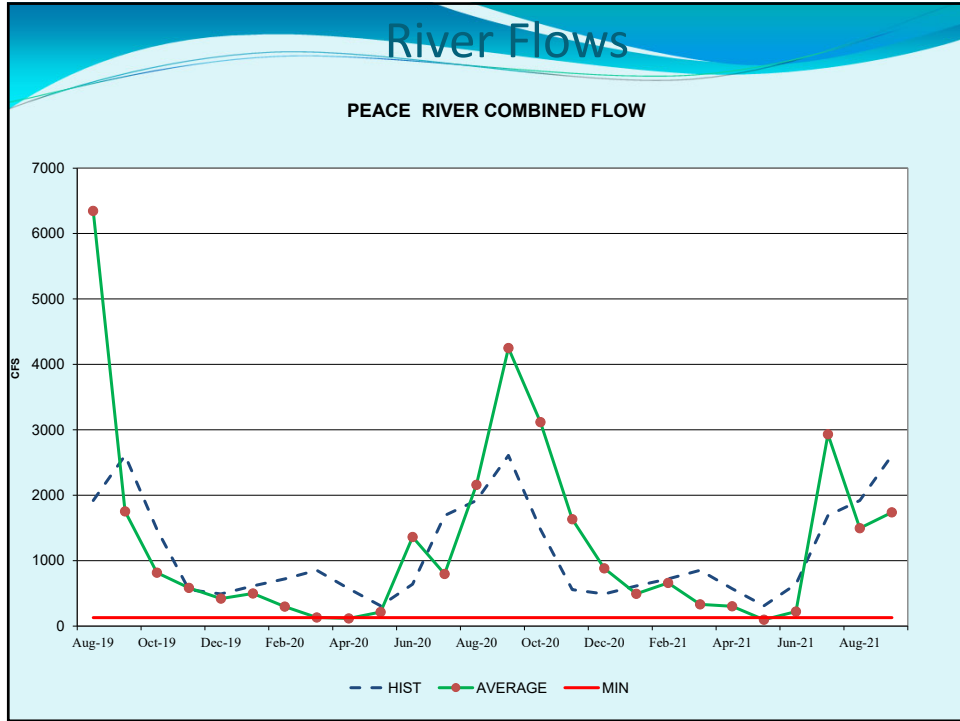
Presentation Materials



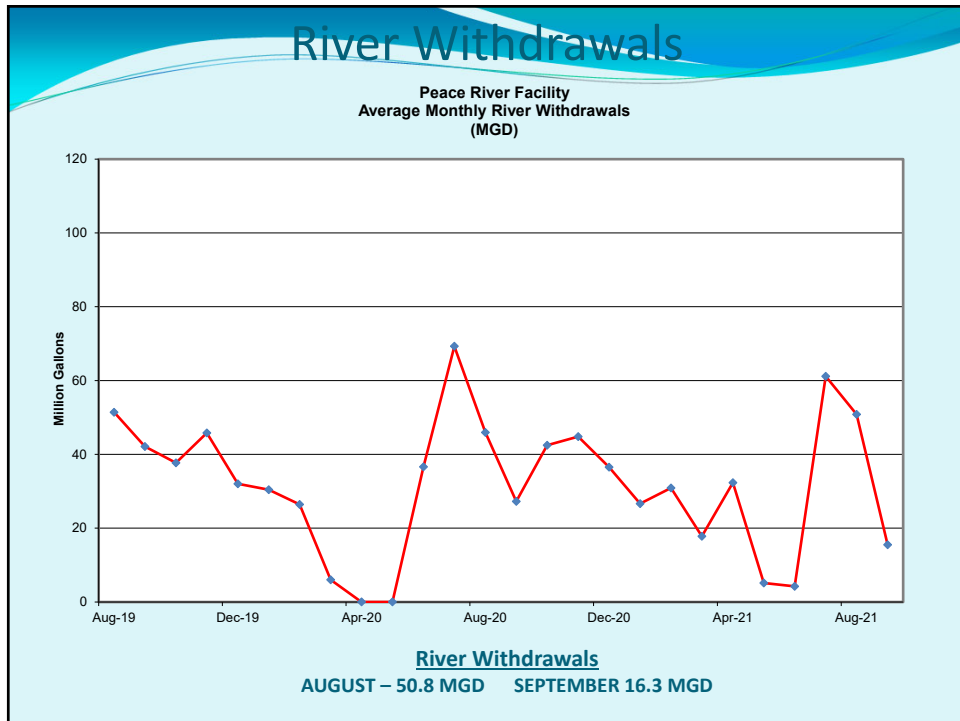
1



2

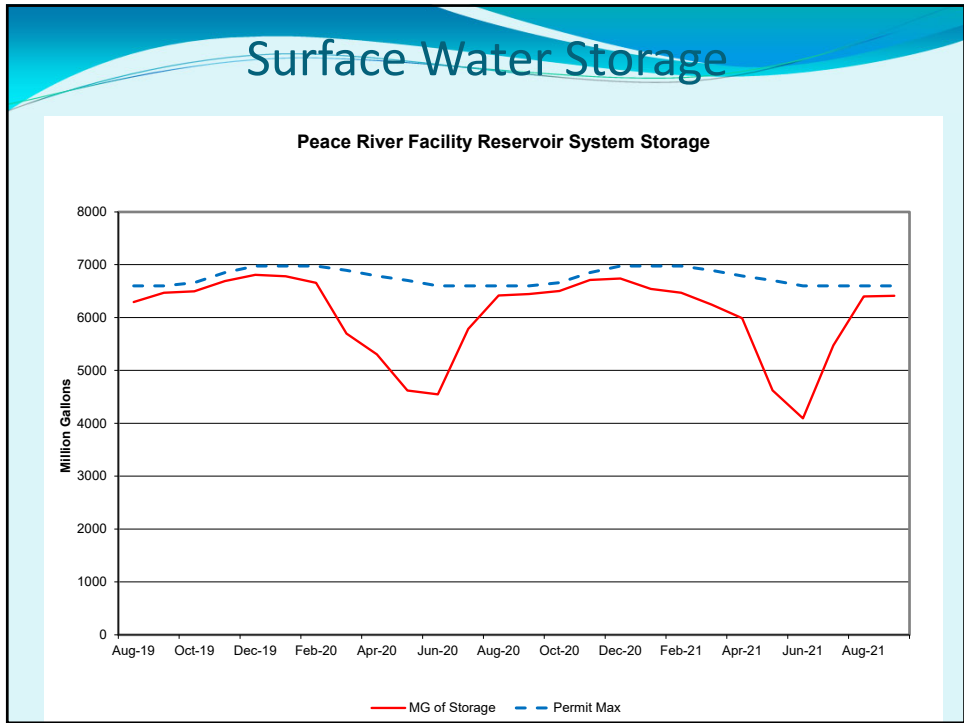


3



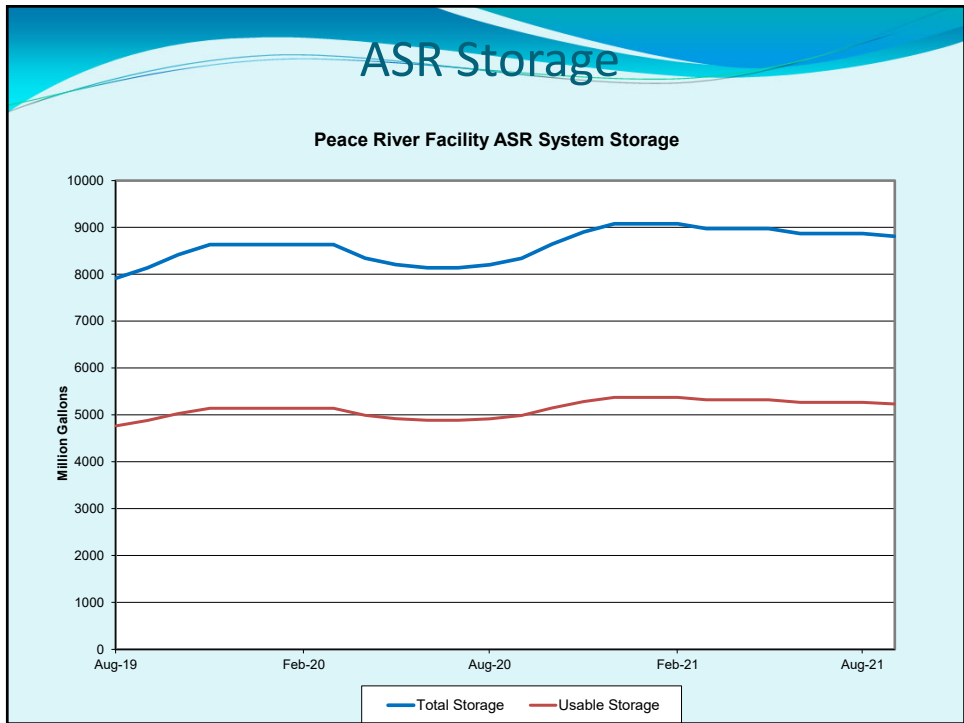
4

Surface Water Storage

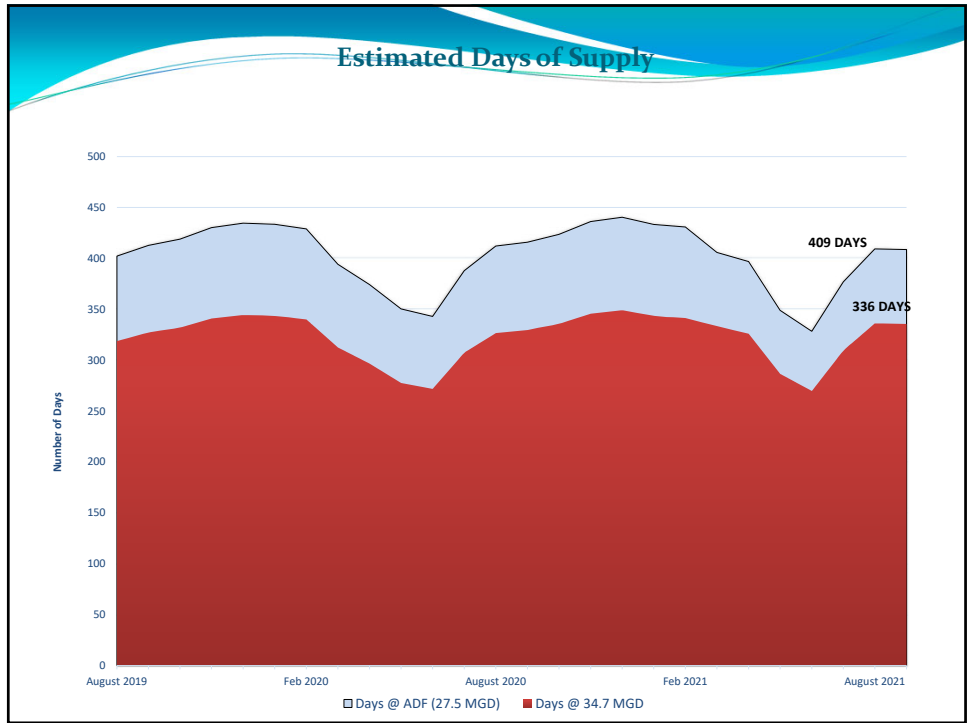


5

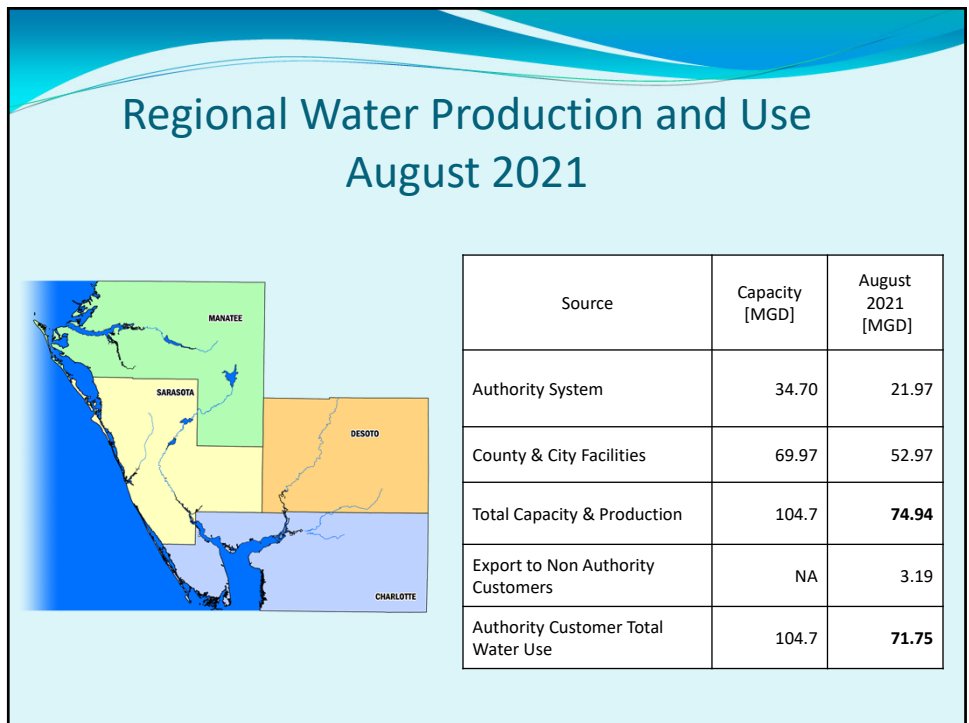
ASR Storage



6



7

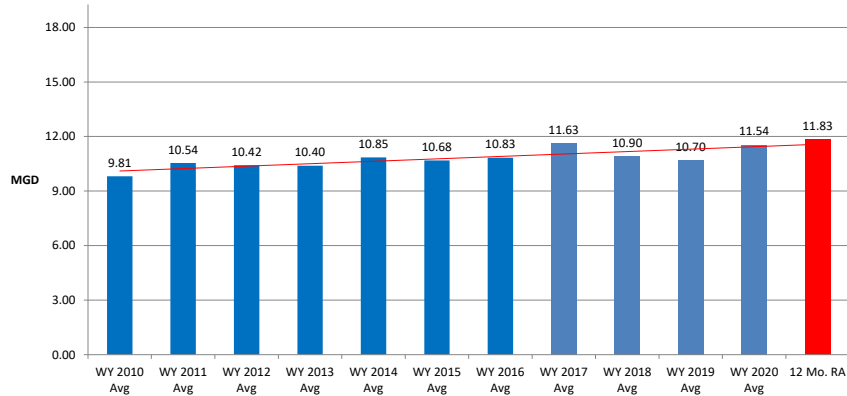


8

Charlotte County

Source	Capacity [MGD]	AUGUST 2021 [MGD]	% UTILIZED
Peace River Facilities	16.10	10.32	64%
Charlotte Self Supply	3.17	0.37	12%
TOTAL	19.27	10.69	55%

ANNUAL AVERAGE USAGE

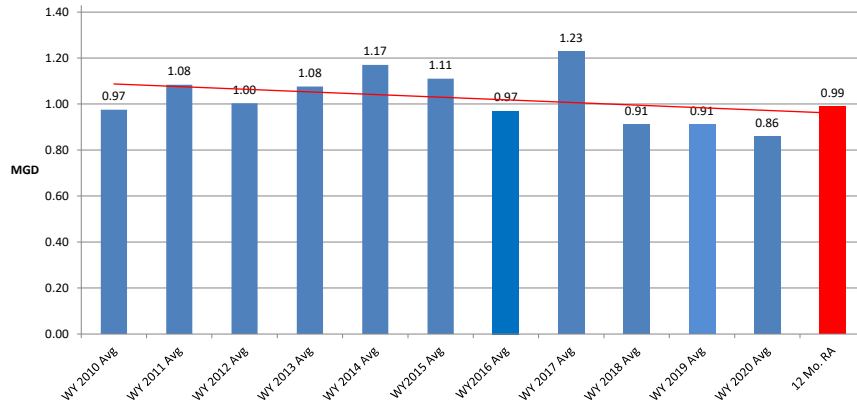


9

Desoto County

Source	Capacity [MGD]	AUGUST 2021 [MGD]	% UTILIZED
Peace River Facilities	0.675	0.49	72%
Desoto Self Supply	0.75	0.32	43%
TOTAL	1.425	0.80	56%

ANNUAL AVERAGE USAGE

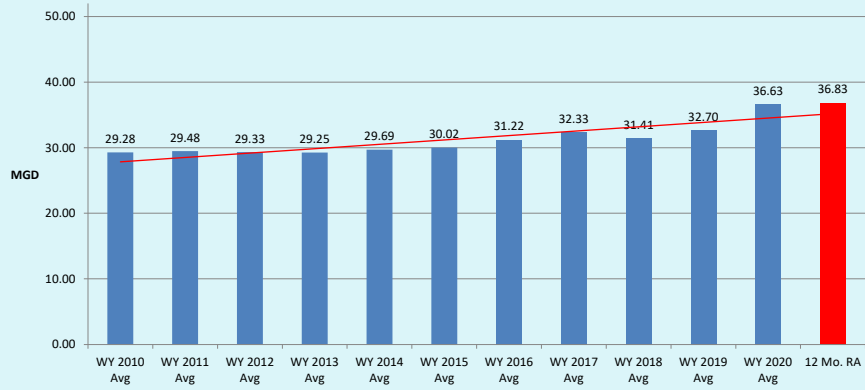


10

Manatee County

Source	Capacity [MGD]	AUGUST 2021 [MGD]	% UTILIZED
Manatee Self Supply	52.00	37.44	72%
Export to Sarasota Co.	NA	3.38	
Export to Others	NA	3.19	
TOTAL	52.00	44.02	84%

ANNUAL AVERAGE USAGE

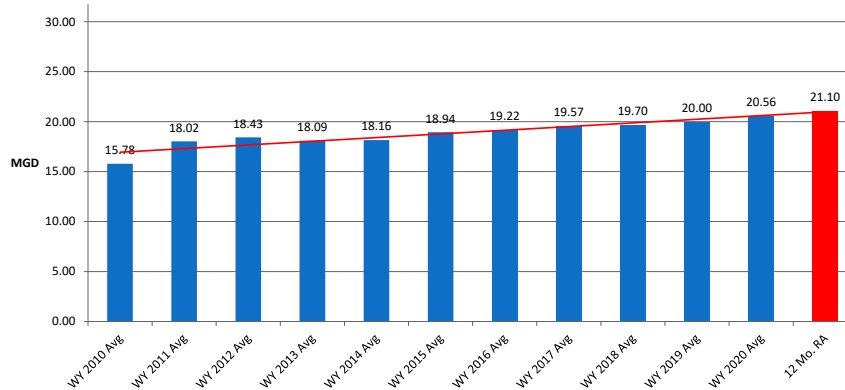


11

Sarasota County

Source	Capacity [MGD]	AUGUST 2021 [MGD]	% UTILIZED
Peace River Facilities	15.06	9.76	65%
Import from Others	5.00	3.48	70%
County Self Supply	10.52	6.30	60%
TOTAL	33.58	19.55	58%

ANNUAL AVERAGE USAGE

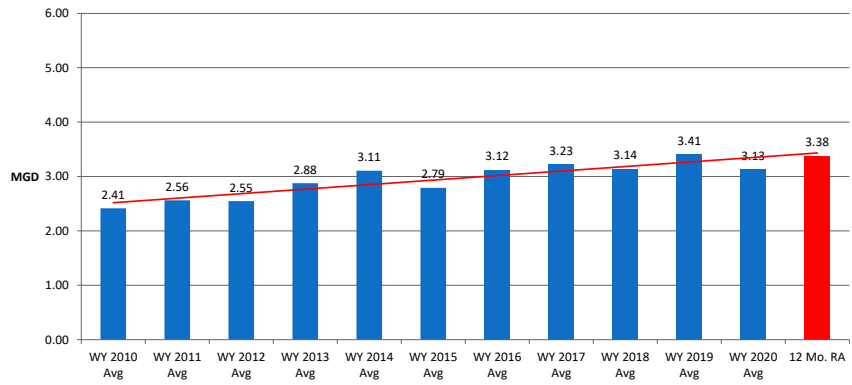


12

North Port

Source	Capacity [MGD]	AUGUST 2021 (MGD)	% UTILIZED
Peace River Facilities	2.865	1.40	49%
North Port Self Supply	3.30	1.97	60%
Water Exchanged	N/A	-0.10	
TOTAL	6.165	3.27	53%

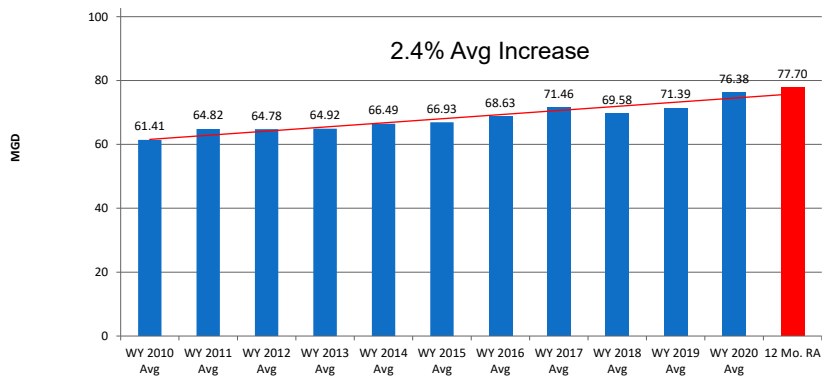
ANNUAL AVERAGE USAGE



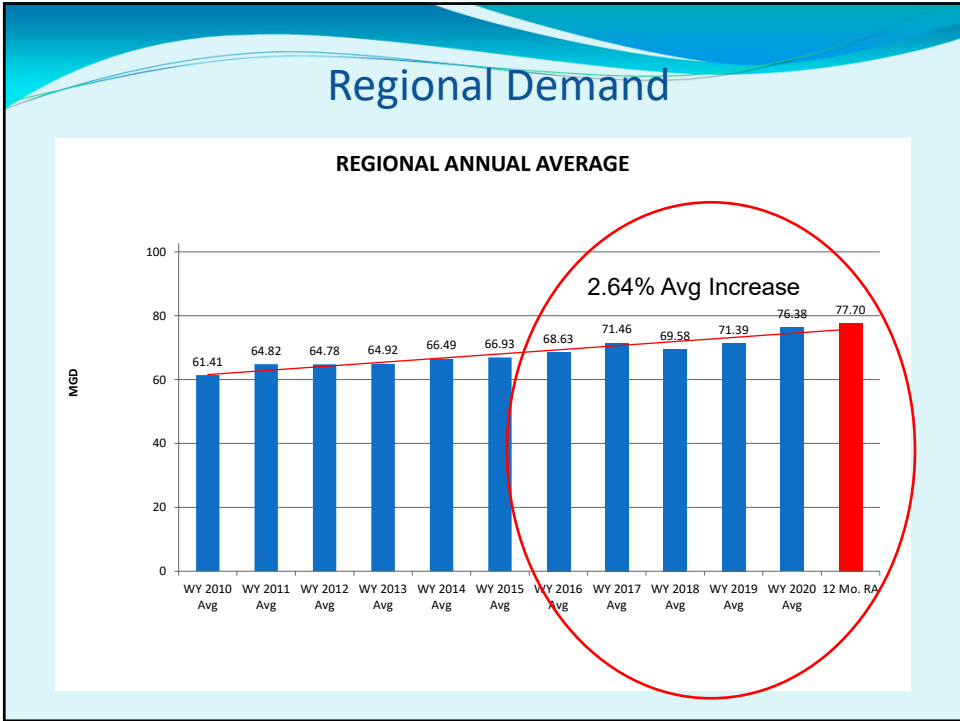
13

Regional Demand

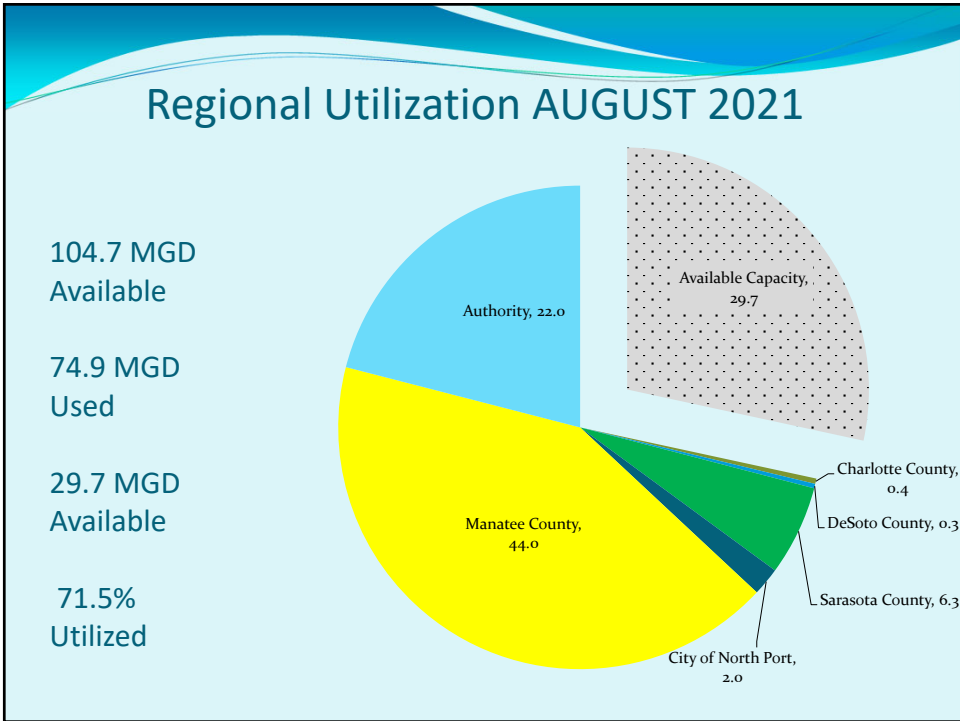
REGIONAL ANNUAL AVERAGE



14



15



16

Questions?



17